
Pittcon 2005

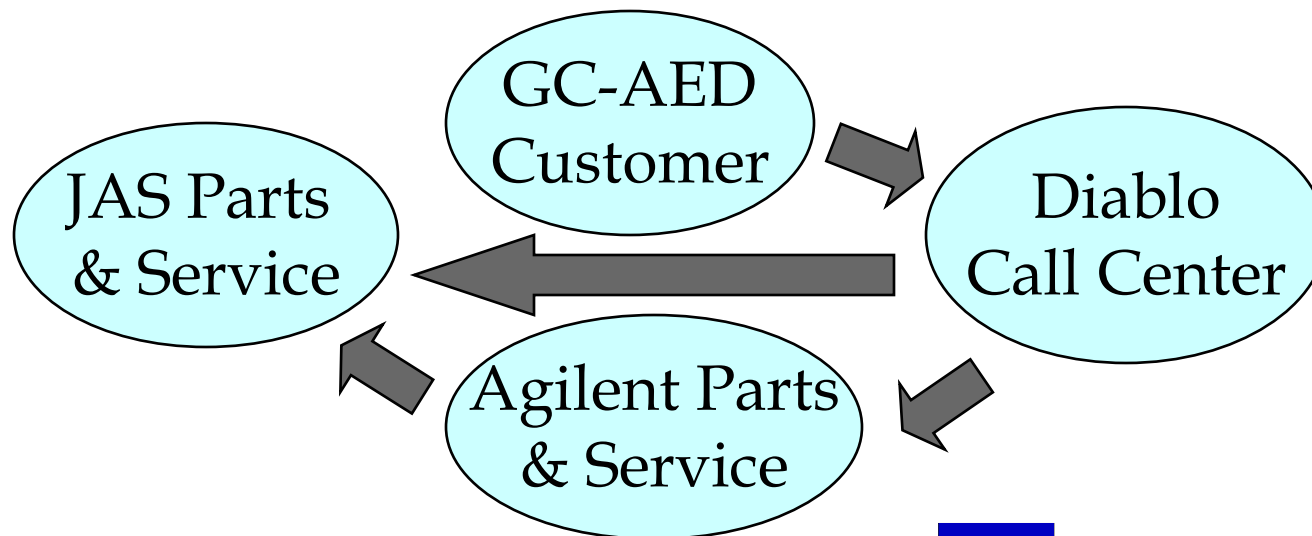
GC-AED User Group Meeting

- ▼ Support for existing GC-AED users
- ▼ Availability of new GC-AED systems
- ▼ New GC-AED hardware
- ▼ New GC-AED software and upgrades
- ▼ Parts and service
- ▼ Application assistance



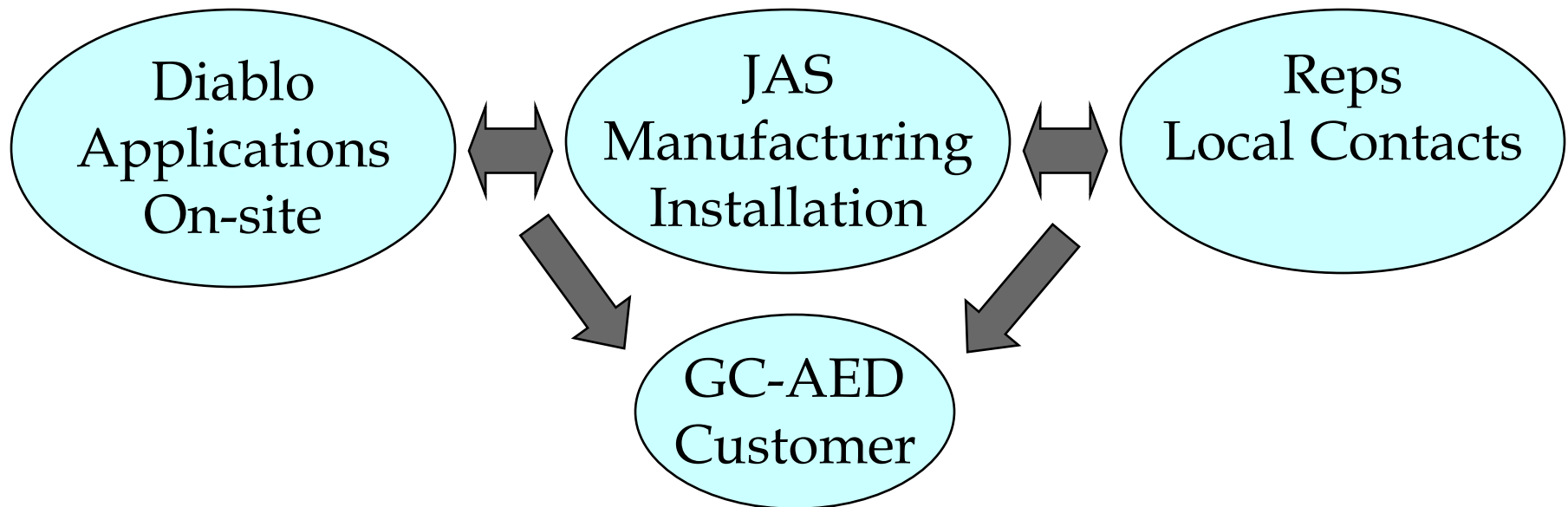
Support for Existing GC-AED Users

- ▼ The Agilent GC-AED Support Team:
 - ⦿ Agilent Technologies – parts and service
 - ⦿ JAS – new systems, parts and service
 - ⦿ Diablo Analytical – Call center, training, applications



New GC-AED Systems

- ▼ The JAS GC-AED Sales and Support Team:
 - JAS – new systems, parts and service
 - Diablo Analytical – Call center, training, applications
 - Manufacturer Reps with local customer interaction



New GC-AED Hardware

- ▼ New and more reliable water pump – JAS
- ▼ New and more reliable water drawer - JAS
- ▼ New high temperature inlet - JAS
- ▼ New high temperature transfer line – JAS
- ▼ New multi-element SimDis software - WMI



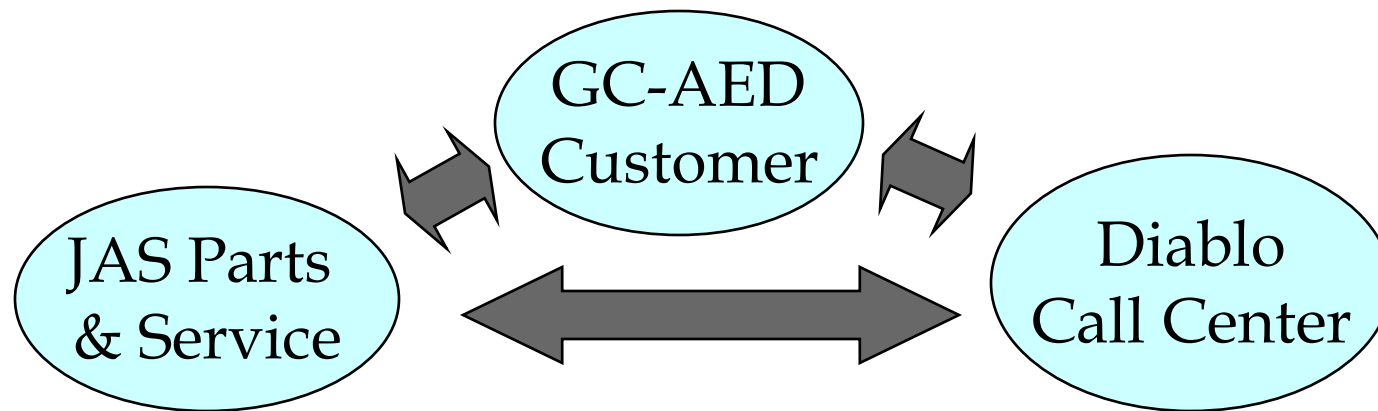
New GC-AED Software and Upgrades

- ▼ Last Agilent GC-AED software (NT and A.07.XX)
- ▼ Now from JAS – GC-AED Software or upgrades
 - ◌ Win 2000 or Win XP Operating System
 - ◌ A.09.XX or A.10.XX ChemStation
- ▼ New multi-element SimDis software - WMI
- ▼ Simplified User Interface – Diablo
- ▼ CICQuant - Diablo



Support for JAS GC-AED Users Parts and Service

- ▼ The JAS GC-AED Support Team:
 - ⦿ Diablo Analytical – Call center, training, applications
 - ⦿ JAS – new systems, parts and service
 - ⦿ Local Manufacturing Rep



Current GC-AED Application and Training from Diablo Analytical, Inc. – Partnership

- ▼ Agilent Technologies has asked Diablo Analytical to continue GC-AED application support and training
- ▼ JAS and Diablo Analytical have established a partnership for GC-AED support in North America
- ▼ Diablo Analytical GC-AED Call Center unifies GC-AED support for all users in North America – partnership with Agilent and JAS

Contact Information:

925-609-1150

www.diabloanalytical.com

diablo@diabloanalytical.com



Diablo Analytical, Inc.

Overview of Diablo Analytical's GC-AED Products and Services

- ▼ GC-AED Training (classroom or on-site)
- ▼ AED Application Assistance
 - Application development
- ▼ Automation and Programming
- ▼ Productivity-Enhancement Tools
 - GC-AED MDL Calculator - *Free*
 - Simplified User Interface for Agilent ChemStations
 - CICQuant: Automated CIC Reporting from Sequences
 - Custom Element recipes



GC-AED Application Experience

- ▼ GC-AED with GC-MS
- ▼ Petroleum (multi-element simdis, D2887, extended methods)
- ▼ Sulfur and impurities in C1 to C5 hydrocarbons (example: propylene)
- ▼ Pesticides by EPA Method 8085
- ▼ Pesticides in Food Products
- ▼ Organometallic Compounds
- ▼ Specialty Chemical Applications
- ▼ Semiconductor and Disk Drive Applications
- ▼ Gas Supplier Applications
- ▼ Headspace and thermal desorption with GC-AED and GC-MS Applications
- ▼ Manufacturing Site implementations of GC-AED



GC-AED Training

▼ GC-AED Theory and Practice

- ☉ Three Full Days

- ☉ Course Goals:

- ▼ Understand Fundamental Principals of GC-AED
- ▼ Learn to Operate the GC-AED ChemStation Effectively
 - ◆ Suppression and Back Amount
 - ◆ Spectral Manipulations
 - ◆ Compound Independent Calibration
 - ◆ Multi-signal data file issues
- ▼ Understand Special GC-AED Method Development Considerations
 - ◆ Reagent gas optimization
 - ◆ Dynamic range, sensitivity, and selectivity issues
- ▼ Discuss GC-AED Applications, Maintenance, and Special Tips



Diablo Analytical, Inc.

GC-AED Training

▼ GC-AED Theory and Practice

⦿ Course Prerequisites:

- ▼ Basic experience with capillary GC and Agilent ChemStation operation

⦿ Other Details:

- ▼ Course includes hands-on GC-AED ChemStation operation with 13 laboratory exercises and a diskette containing example data files
- ▼ Each course participant receives a 215 page reference manual
- ▼ Includes GC-AED Hardware



GC-AED Training

- ▼ Courses Scheduled Through Agilent, Diablo or JAS
 - ⦿ Course # H8711A (Alliance Training Product)
 - ▼ Scheduled Dates (See Website for details)
 - ▼ Located in the San Francisco Area of California
 - ▼ Located in New Jersey/Philadelphia
 - ▼ 1-800-227-9770 (U.S.) 1-800-265-7768 (Canada)
 - ⦿ Also schedule on-site by arrangement
 - ⦿ Include application development
 - ⦿ Link from <http://www.diabloanalytical.com>



GC-AED Training - on your Site

- ▼ Custom On-site Training
 - ☉ Combine and Classroom Training and Application Assistance in your Laboratory.
 - ☉ Customized to meet your specific needs.
 - ☉ Cost effective for 3 or more participants from the same location.
 - ☉ Contact Diablo Analytical Directly for a Quote
 - ▼ 925-609-1150
 - ▼ diablo@diabloanalytical.com



AED Application Assistance

- ▼ On-site startup training and application assistance
 - ⦿ Gas delivery system issues
 - ⦿ Generate valid data more quickly
- ▼ Assistance with difficult method development problems
 - ⦿ Custom Element Groups and Recipes
 - ⦿ AED with MSD - interfacing and data system issues
- ▼ Diablo's GC-AED Development Laboratory
 - ⦿ Complete G2350 GC-AED system
 - ▼ Custom gas delivery system designed specifically for the GC-AED
 - ⦿ Pre-sales application evaluation



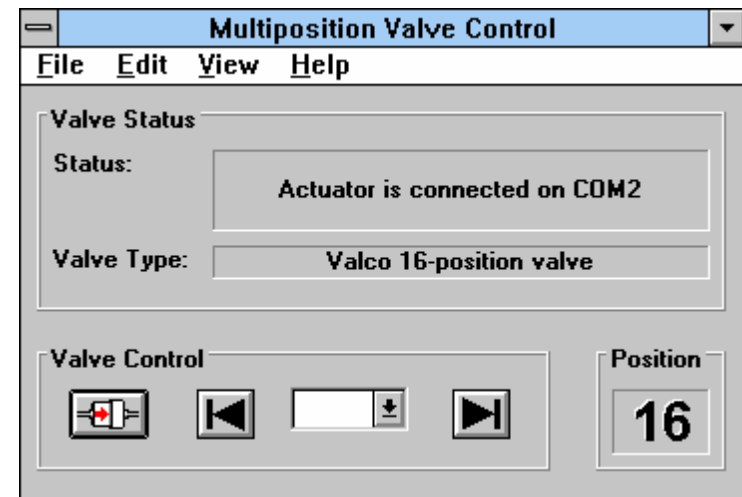
Automation and Programming

▼ Custom Programming Services

- Custom data analysis routines
- Simplified operator interfaces
- ChemStation Macros
- Visual Basic Applications

▼ System Integration

- Integration of custom sampling systems with GC-AED



GC-AED Productivity Enhancement Tools

- ▼ GC-AED MDL Calculator:
- ▼ Free to AED Users
- ▼ Calculate:
 - ⦿ Elemental MDL
 - ⦿ Compound MDL
 - ⦿ Carbon Interference Level

The screenshot shows the 'GC-AED MDL Calculator' window from Diablo Analytical, Inc. The interface includes a menu bar with 'File' and 'Help'. The title bar reads 'GC-AED MDL Calculator'. Below the title bar, the company logo and name are displayed. The main area contains several input fields and controls:

- Instrument:** Radio buttons for 'G2350A AED' (selected) and '5921A AED'.
- Element:** A dropdown menu showing 'Cl 479'.
- Mol Formula:** A text box containing 'CH2Cl2'.
- Inst. DL (pg/s):** A text box with '14.3'.
- Selectivity:** A text box with '13000'.
- Peak Width (s):** A text box with '1'.
- Min. Det. Mass (pg):** A text box with '14.3'.
- Inj Volume (uL):** A text box with '.2'.
- Elem. Wt Fraction:** A text box with '0.8348'.
- Injection Mode:** Radio buttons for 'Split ->' (selected) and 'Splitless / Direct / On-column'. The 'Split ->' mode has a 'Split Ratio' of '40 : 1'.
- Results:** Three text boxes showing calculated values: 'Elemental MDL (ng/uL): 2.86', 'Compound MDL (ng/uL): 3.425776', and 'Carbon Inteferece Level (ng/uL): 37180.0'.

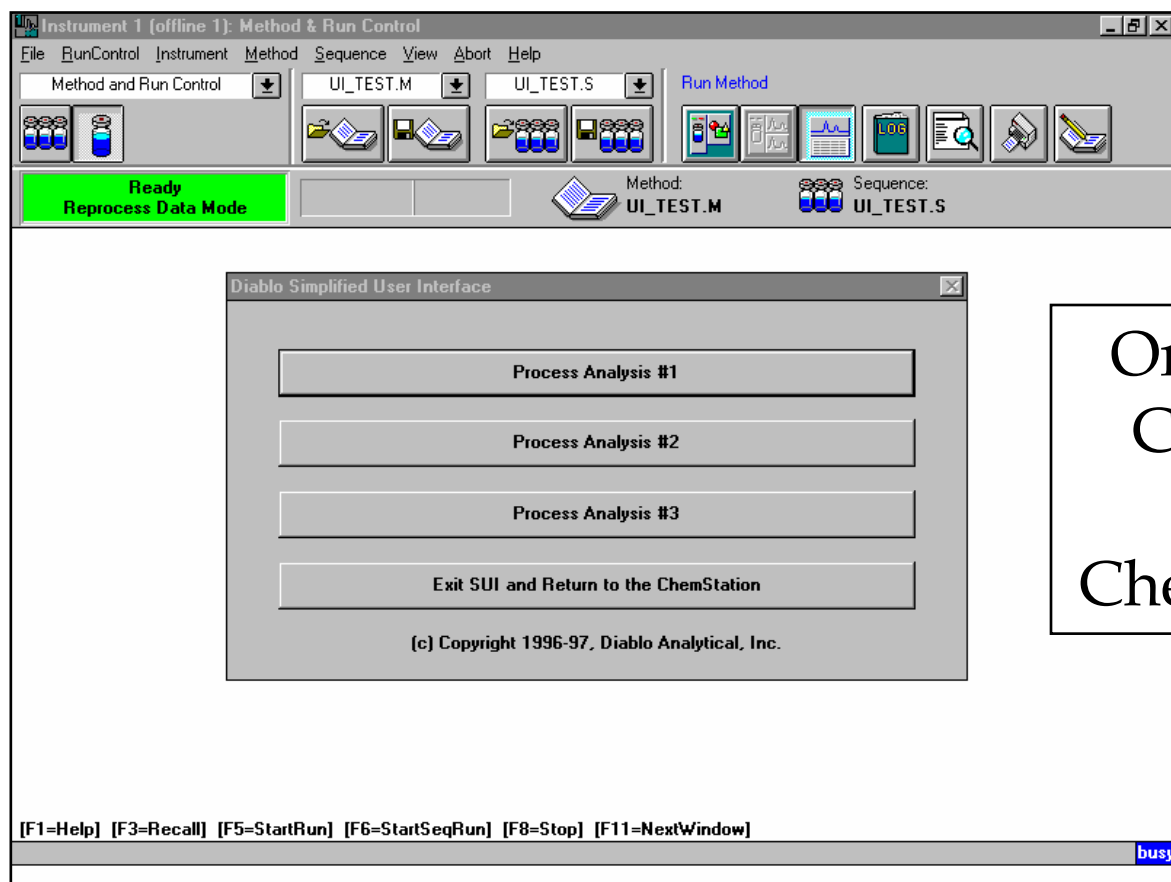
At the bottom of the window are three buttons: 'Calculate', 'Help', and 'Exit'.



Diablo Analytical, Inc.

GC-AED Productivity Enhancement Tools

- ▼ Simplified User Interface for Agilent ChemStations



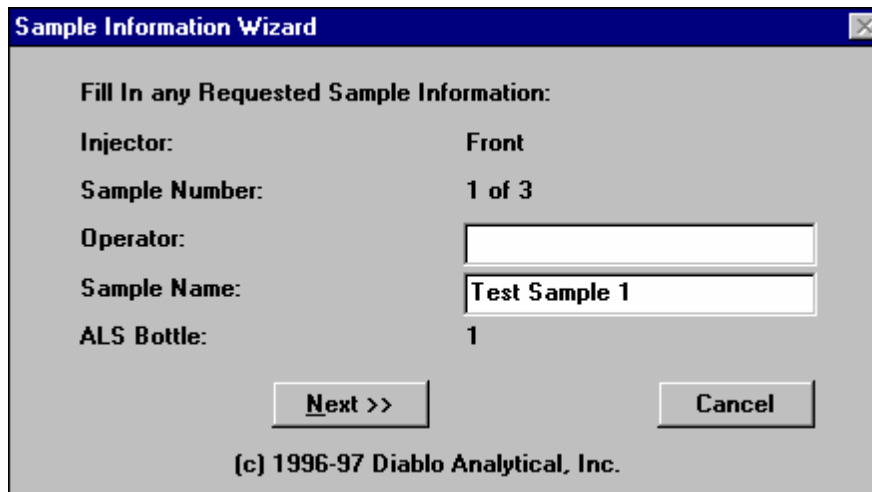
One-Button
Control of
Agilent
ChemStations



Diablo Analytical, Inc.

Simplified User Interface

- Sample Information Wizard Prompts the Operator:



Sample Information Wizard

Fill In any Requested Sample Information:

Injector: Front

Sample Number: 1 of 3

Operator:

Sample Name:

ALS Bottle: 1

(c) 1996-97 Diablo Analytical, Inc.

Method Developer determines what information is collected from the operator



Sample Information Wizard

Fill In any Requested Sample Information:

Injector: Front

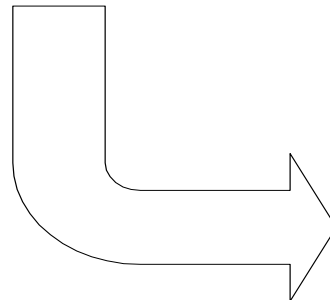
Sample Number: 3 of 3

Operator:

Sample Name:

ALS Bottle: 3

(c) 1996-97 Diablo Analytical, Inc.



Simplified User Interface for Agilent ChemStations

- ▼ Allows ChemStation analyses to be started by pressing a single button. The operator is automatically prompted for any sample information required for the analysis.
- ▼ Uses already-existing sequence and method files. No modification of existing methodology is required.
- ▼ Has an automatic data file naming feature that prevents existing data files from being accidentally overwritten.
- ▼ Can be configured quickly and easily using the configuration editor included with the software.
- ▼ Runs under the NT versions of the Agilent ChemStation (through 7.0)



CICQuant

Automated CIC Reporting from Sequences

The screenshot displays the 'GC-AED Instrument (offline 1): Data Analysis' software interface. The main window shows a chromatogram with a peak at approximately 13.5 minutes. A menu is open over the 'AED-CIC' option, listing various functions such as 'Int Displayed Range', 'Int Zoomed Peak', 'CIC Cal Table', 'Calibrate Peak', 'Calculate CIC Results', 'View CIC Results', 'Save/Print CIC Results', 'Possible Formulas', 'CIC Preferences', 'AED-CIC Help', 'Display CICQuant Setup...', and 'Start Auto CICQuant'. The 'Display CICQuant Setup...' option is highlighted.

The 'Diablo CICQUANT' dialog box is open, showing the following settings:

- Result File Name (default is CIC_RPT1.TXT in the Data Directory): File Name: []
- CIC Quant File Name (default is DEF_CAL.CIC in the Method Directory): File Name: [] Directory: []
- Save and Print Results: Area Weight Ratio
- Text Results: Printer Screen
- Print Chromatogram: yes no
- Ref. Element: [C]
- Wght Unit (7 max): [ng]

Buttons: OK, Cancel

(c) Copyright 1997-98, Diablo Analytical, Inc.

