

GPA 2145-09 Migration Guide

Copyright 2008-2009, Diablo Analytical, Inc.

Standard Components and Physical Constants - GPA Standard 2145-09

Select	Component	Molar Mass Ratio	Heating Value	Summation Factor	Volume Factor
<input type="checkbox"/>	Methane	0.5539	1010	0.0116	0
<input type="checkbox"/>	Ethane	1.0382	1769.7	0.0238	37.488
<input type="checkbox"/>	Propane	1.5225	2516.1	0.0347	36.391
<input type="checkbox"/>	i-Butane	2.0068	3251.9	0.0441	30.637
<input type="checkbox"/>	n-Butane	2.0068	3262.3	0.047	31.801
<input type="checkbox"/>	i-Pentane	2.4911	4000.9	0.0576	27.414
<input type="checkbox"/>	n-Pentane	2.4911	4008.7	0.0606	27.658
<input type="checkbox"/>	n-Hexane	2.9754	4755.9	0.0776	24.38
<input type="checkbox"/>	n-Heptane	3.4597	5502.6	0.0951	21.73
<input type="checkbox"/>	n-Octane	3.944	6249	0.1128	19.57
<input type="checkbox"/>	n-Nonane	4.4283	6996.3	0.1307	17.816
<input type="checkbox"/>	n-Decane	4.9126	7742.9	0.1556	16.334
<input type="checkbox"/>	Ethylene	0.9686	1599.7	0.0207	0
<input type="checkbox"/>	Propylene	1.4529	2333	0.0327	39.293
<input type="checkbox"/>	Hexanes Plus	3.21755	5129.22	0.08637	23.104
<input type="checkbox"/>	Carbon Dioxide	1.5195	0	0.0195	0
<input type="checkbox"/>	Hydrogen Sulfide	1.1767	637.1	0.0239	0
<input type="checkbox"/>	Nitrogen	0.9672	0	0.00442	0
<input type="checkbox"/>	Oxygen	1.1048	0	0.0072	0
<input type="checkbox"/>	Helium	0.1382	0	0	0
<input type="checkbox"/>	Air	1	0	0.00537	0
<input type="checkbox"/>	Water	0.62202	50.31	0.0651	0

Data Source: GPA Standard 2145-09

Transfer Close Print Help

Diablo Analytical BTU Calculator 3.0 Software
GPA 2145-09 Migration Guide

Copyright 2008-2009, Diablo Analytical, Inc. All rights reserved.

This software and documentation are copyrighted by Diablo Analytical, Inc. All other brands or product names are trademarks or registered trademarks of their respective owners.

Diablo Analytical, Inc.

5141 Lone Tree Way
Antioch, CA 94531

Phone: 925-755-1005

Fax: 925-755-1007

E-mail: support@diabloanalytical.com

Home Page: www.diabloanalytical.com

Manual Revision 20090709-1225

DIABLO ANALYTICAL, INC. SOFTWARE LICENSE AGREEMENT AND LIMITED WARRANTY

LICENSE AGREEMENT

IMPORTANT: Please carefully read the License Agreement below before installing the software. The right to use this software product is sold only on the condition that the customer agrees to the following license. **INSTALLING THE SOFTWARE INDICATES YOUR ACCEPTANCE OF THESE TERMS AND CONDITIONS.**

In return for payment of the one-time license fee for this software product, Customer receives from Diablo Analytical, Inc. (Diablo) a license to use the product subject to the following terms and conditions:

Use: The product may be used one computer or workstation. A separate license agreement and fee is required for each additional computer or workstation on which the product is used. Customer may not reverse assemble, decompile, or modify the software.

Copies: The software product may not be duplicated or copied except for archive purposes, program error verification, or to replace defective media, and all copies made must bear the copyright notices contained in the original.

Ownership: Purchase of this license does not transfer any right, title or interest in the software product to Customer except as specifically set forth in this License Agreement. Customer is on notice that the software product is protected under copyright laws.

Transfer of Rights: This license and the software product may be transferred to a third party, with prior written consent from Diablo, provided the third party agrees to all the terms of this License Agreement and the Customer does not retain any copies of the software product.

Sublicensing and Distribution: Customer may not sublicense the software or distribute copies of the software to the public in physical media or by telecommunication without the prior written consent of Diablo.

Termination: Diablo reserves the right to terminate this license upon breach. In event of termination, Customer will either return all copies of the product to Diablo, or with Diablo's prior consent, provide Diablo with a certificate of destruction of all copies.

Updates and Upgrades: Customer agrees that the software does not include updates and upgrades which may be available from Diablo in a separate support agreement.

Export Restrictions: Customer agrees not to export or re-export the software or any copy in violation of the U.S. Export Administration regulations or other applicable regulation.

LIMITED WARRANTY

Limited Warranty: Diablo warrants that the original disks are free from defects for 90 days from the date of delivery of the software.

No Other Warranties: To the maximum extent permitted by applicable law, Diablo expressly disclaims any warranty for the software product. The software product and any related documentation is provided "as is" without warranty of any kind, either express or implied, including, without limitation, the implied warranties or merchantability of fitness for a particular purpose. The entire risk arising out of use or performance of the software product remains with the customer.

Limitation of Liability and Customer Remedies: Diablo's entire liability and the customer's exclusive remedy under this license agreement shall be, at Diablo's option, either (a) return of the price paid for the software or (b) replacement of the software that does not meet Diablo's Limited Warranty and which is returned to Diablo with a copy of the customer's receipt. Any replacement software will be warranted for the remainder of the original warranty period, or 30 days, whichever is longer. These remedies are not available outside the United States of America.

No Liability for Consequential Damages: To the maximum extent permitted by applicable law, in no event shall Diablo be liable for any damages whatsoever (including, without limitation, damages for loss of business profit, business interruption, loss of business information, or any other pecuniary loss) arising out of the use or inability to use the product, even if Diablo has been advised of the possibility of such damages. Because some states/jurisdictions do not allow the exclusion or limitation of liability for consequential or incidental damages, the above limitation may not apply to you.

Contents

Migration Procedure **1**

- Introduction 1
- Disclaimer 1
- Gas Processors Association 1
- Migration Methods..... 1
- Method 1: Update your existing configuration files..... 2
- Method 2: Edit the default GPA 2145-09 configuration file 4

Index **7**

Migration Procedure

Introduction

The Gas Processors Association (GPA) released the new GPA 2145-09 Standard, “Table of Physical Properties for Hydrocarbons and Other Compounds of Interest to the Natural Gas Industry” in August of 2008. This migration guide describes how to update the physical property tables in your current Diablo BTU Calculator 2.0/3.0 configurations to the new GPA 2145-09 physical property values.

Disclaimer

Diablo Analytical provides this migration procedure and the physical constant data sources as a courtesy to our customers. However, it is the customer’s responsibility to ensure that the physical constants and other settings in their configuration are correct and that the results generated by the BTU Calculator software are correct for their application.

Please review the License Agreement and Limited Warranty displayed at the beginning of the printed manual for Diablo’s limits on liability.

Gas Processors Association

For more information on GPA Standard 2145-09, you should contact the Gas Processors Association:

6526 East 60th Street
Tulsa, Oklahoma 74145

Phone: 918-493-3872

Web: www.gasprocessors.com

E-Mail: gpa@gasprocessors.com

Migration Methods

There are two migration methods that we recommend:

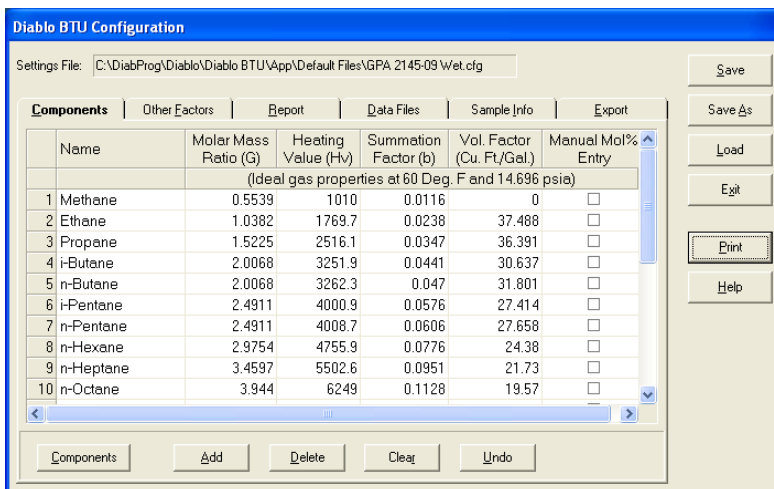
Method 1: Update your existing configuration files with the new GPA 2145-09 physical property values. This method is recommended for most users, particularly those users who have customized their configuration files to any extent. See “[Method 1: Update your existing configuration files](#)” on page 2.

Method 2: Start with the default GPA 2145-09 configuration files and edit them to meet your specific needs. This method is recommended for new BTU Calculator users, or current users who have made only minimal modifications to their configuration. See “[Method 2: Edit the default GPA 2145-09 configuration file](#)” on page 4.

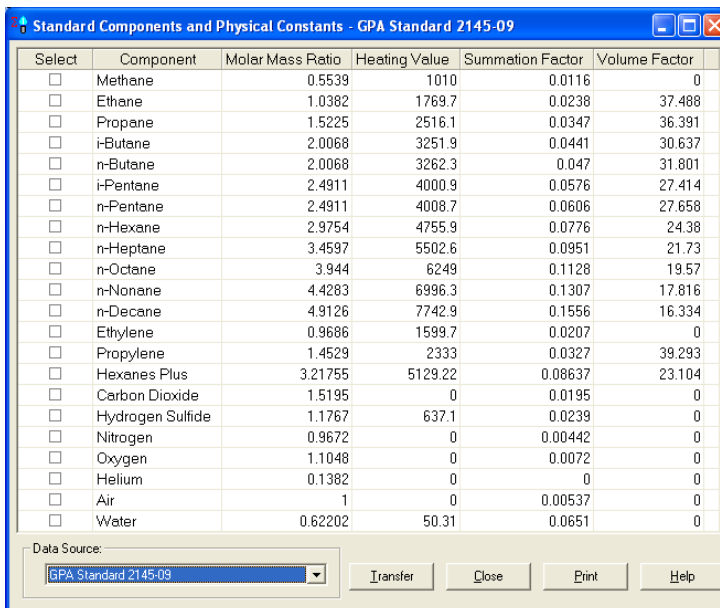
Method 1: Update your existing configuration files

This migration method is recommended for most users, particularly those users who have customized their configuration files to any extent.

1. Open the BTU Calculator configuration window by clicking on the “Tools > Edit Configuration...” menu option.



2. Click the “Save As” button, to save the current configuration under a new file name. This will allow you to preserve your existing configuration.
3. Click the “Components” button to display the standard components and physical properties window.



4. In the “Data Source” list box choose the “GPA Standard 2145-09” option. A data table will be display containing the components and their physical properties as defined in the GPA 2145-09 standard.
5. For each component in this table that is present in your configuration, click the checkbox in the left-most column so that a checkmark is displayed.

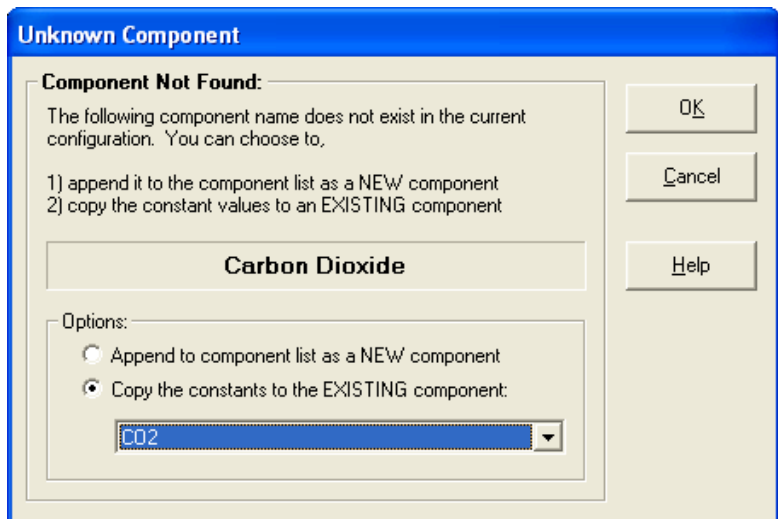
Select	Component	Molar Mass Ratio	Heating Value	Summation Factor	Volume Factor
<input checked="" type="checkbox"/>	Methane	0.55397	1010.0	0.0116	0
<input checked="" type="checkbox"/>	Ethane	1.0383	1769.7	0.0238	37.503
<input checked="" type="checkbox"/>	Propane	1.5227	2516.2	0.0349	36.404
<input checked="" type="checkbox"/>	i-Butane	2.0071	3252.0	0.0444	30.644
<input checked="" type="checkbox"/>	n-Butane	2.0071	3262.4	0.0471	31.794
<input checked="" type="checkbox"/>	i-Pentane	2.4914	4000.9	0.0572	27.390
<input checked="" type="checkbox"/>	n-Pentane	2.4914	4008.7	0.0603	27.676
<input type="checkbox"/>	n-Hexane	2.9758	4756.0	0.0792	24.380
<input type="checkbox"/>	n-Heptane	3.4601	5502.5	0.0953	21.729
<input type="checkbox"/>	n-Octane	3.9445	6248.9	0.1214	19.582
<input type="checkbox"/>	n-Nonane	4.4289	6996.4	0.1350	17.807
<input type="checkbox"/>	n-Decane	4.9132	7743.0	0.1516	16.323
<input checked="" type="checkbox"/>	Hexanes Plus	3.2180	5129.2	0.0883	23.105
<input checked="" type="checkbox"/>	Carbon Dioxide	1.5197	0	0.0195	0
<input checked="" type="checkbox"/>	Hydrogen Sulfide	1.1769	637.11	0.0242	0
<input checked="" type="checkbox"/>	Nitrogen	0.9673	0	0.00442	0
<input checked="" type="checkbox"/>	Oxygen	1.1050	0	0.0072	0
<input type="checkbox"/>	Helium	0.1382	0	0	0
<input type="checkbox"/>	Air	1.0000	0	0.00523	0
<input checked="" type="checkbox"/>	Water	0.62210	50.312	0.05557	0

Data Source: GPA Standard 2145-03

Buttons: Transfer, Close, Print, Help

- When you are finished selecting the components, click the “Transfer” button to transfer the GPA 2145-09 physical property values to your configuration.
- If the component names in your configuration match the standard component names as shown in this table, then your configuration will be updated without requiring further input.

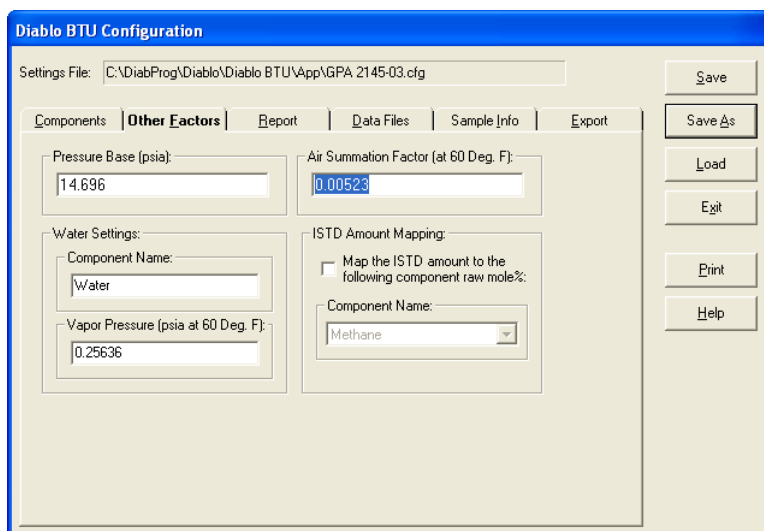
However, if any of the component names in your configuration don’t match the standard component names (“CO2” vs. “Carbon Dioxide”, for example). Then the “Unknown Component” dialog box is displayed.



Select the “Copy the constants to an EXISTING component” option, and then choose the correct component name from your configuration from the list box. Click “OK” to transfer the standard physical properties to the selected component in your configuration.

You will have to repeat this process for each unknown component in your configuration file.

- Switch to the “Other Factors” tab of the configuration editor window.



- Change the “Air Summation Factor” to its new value of: **0.00537**
- Click the “Save” button to save your updated configuration.
- It is always a good idea to save backup copies of your configuration files.

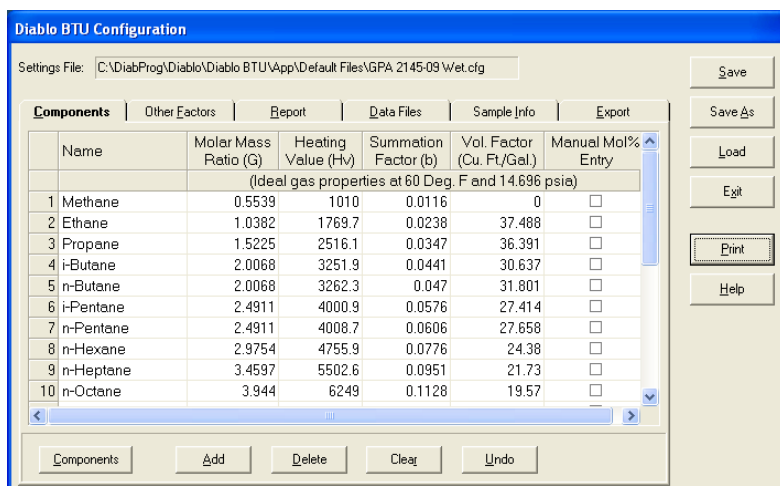
Important: You will need to repeat this migration procedure for each configuration file that you use.

Method 2: Edit the default GPA 2145-09 configuration file

This migration method is recommended for new BTU Calculator users or current users who have made only minimal modifications to their configuration.

Important: If you have made more than a few minor changes to your configuration you should use “Method 1” described above to migrate your configuration.

- Open the BTU Calculator configuration window by clicking on the “Tools > Edit Configuration...” menu option.



2. Click the “Print” button to print your current configuration. This will allow you to confirm that you have correctly edited the default GPA 2145-09 configuration.
3. Click the “Load” button and choose one of the default GPA 2145-09 configuration files: either “GPA 2145-09.cfg” or “GPA 2145-09 Wet.cfg” (which includes water as a component and generates both dry and saturated results).
4. Click the “Save As” button, to save the default configuration under a new file name. This will allow you to preserve your existing default configuration file and assure that your new configuration won’t be overwritten if you ever upgrade the BTU Calculator software.
5. Edit the default configuration so that it provides the desired functionality for your application. Use the printed copy of your configuration to help guide you. See the Diablo BTU Calculator 2.0 Reference Manual for information on the various configuration settings.

In particular:

- In the “Components” tab, edit any component names that need to match the names from the Cerity or EZChrom method/report.
 - In the “Other factors” tab, change the “Pressure Base” to the correct value for your location.
 - Edit the “Report”, “Data Files”, “Sample Info”. and “Export” tabs to produce the desired results.
6. When you have finished editing the configuration, press the “Save” button to save your new configuration.
 7. It is always a good idea to save backup copies of your configuration files.

Index

D

Disclaimer 1

G

Gas Processors Association 1

I

Introduction 1

M

Method 1: Update your existing configuration files 2

Method 2: Edit the default GPA 2145-09 configuration
file 4

Migration Methods 1

Migration Procedure 1