

Quick Start Guide - EZChrom Edition

The screenshot displays the Diablo EZReporter Software interface. The window title is "Diablo EZReporter Software" and it includes a menu bar with "File", "Tools", and "Help". The main area is divided into three tabs: "Sample Results" (selected), "Parameter Monitor", and "Results Database".

Sample Information:

Sample Information	
Sample Name	GPA 2172-09 Calculation Check at 14.696 psia
Sample Notes	Gas properties at 60 Deg. F and 14.696 psia (Gas Analysis on Dry Basis)
Report Date	2011-09-02 14:15:59
EZReporter Configuration File	GPA 2172-09 Calculation Check at 14.696 psia.cfg
EZReporter Data File	GPA 2172-09 Example Data at 14.696 psia.btu
EZReporter Version	2.0.1.0

Component Summary:

Component Name	Norm%	Norm Mol% (Sat.)	Norm Mol% (Wet)	Weight% (Dry)	Weight% (Sat.)	Weight% (Wet)	Gross HV (Dry) (BTU / Ideal cu.ft.)
Water	0.0000	1.7447	1.6183	0.0000	1.5538	1.4410	0.0
Helium	0.0300	0.0295	0.0295	0.0059	0.0058	0.0058	0.0
Hydrogen Sulfide	0.0000	0.0000	0.0000	0.0000	0.0000	0.0000	0.0
Carbon Dioxide	2.0200	1.9848	1.9873	4.3862	4.3181	4.3230	0.0

Results Summary:

Result	Dry	Sat. (Base)	Wet (Flowing)
Total Raw Mole% (Dry)	100.0000		
Pressure Base (psia)	14.696		
Temperature Base	60.0		
Flowing Temperature (Deg. F)	76.0		
Flowing Pressure (psia)	28.0		
Water Mole%	-	1.7447	1.6183

Data processed - Source: EZReporter data file

Diablo Analytical EZReporter Software
Quick Start Guide

Copyright 2012, Diablo Analytical, Inc. All rights reserved.

This software and documentation are copyrighted by Diablo Analytical, Inc. All other brands or product names are trademarks or registered trademarks of their respective owners.

Diablo Analytical, Inc.

5141 Lone Tree Way
Antioch, CA 94531

Phone: 925-755-1005

Fax: 925-755-1007

E-mail: support@diabloanalytical.com

Home Page: www.diabloanalytical.com

Manual Revision 20120328-1042

DIABLO ANALYTICAL, INC. SOFTWARE LICENSE AGREEMENT AND LIMITED WARRANTY

LICENSE AGREEMENT

IMPORTANT: Please carefully read the License Agreement below before installing the software. The right to use this software product is sold only on the condition that the customer agrees to the following license. **INSTALLING THE SOFTWARE INDICATES YOUR ACCEPTANCE OF THESE TERMS AND CONDITIONS.**

In return for payment of the one-time license fee for this software product, Customer receives from Diablo Analytical, Inc. (Diablo) a license to use the product subject to the following terms and conditions:

Use: The product may be used one computer or workstation. A separate license agreement and fee is required for each additional computer or workstation on which the product is used. Customer may not reverse assemble, decompile, or modify the software.

Copies: The software product may not be duplicated or copied except for archive purposes, program error verification, or to replace defective media, and all copies made must bear the copyright notices contained in the original.

Ownership: Purchase of this license does not transfer any right, title or interest in the software product to Customer except as specifically set forth in this License Agreement. Customer is on notice that the software product is protected under copyright laws.

Transfer of Rights: This license and the software product may be transferred to a third party, with prior written consent from Diablo, provided the third party agrees to all the terms of this License Agreement and the Customer does not retain any copies of the software product.

Sublicensing and Distribution: Customer may not sublicense the software or distribute copies of the software to the public in physical media or by telecommunication without the prior written consent of Diablo.

Termination: Diablo reserves the right to terminate this license upon breach. In event of termination, Customer will either return all copies of the product to Diablo, or with Diablo's prior consent, provide Diablo with a certificate of destruction of all copies.

Updates and Upgrades: Customer agrees that the software does not include updates and upgrades which may be available from Diablo in a separate support agreement.

Export Restrictions: Customer agrees not to export or re-export the software or any copy in violation of the U.S. Export Administration regulations or other applicable regulation.

LIMITED WARRANTY

Limited Warranty: Diablo warrants that the original disks are free from defects for 90 days from the date of delivery of the software.

No Other Warranties: To the maximum extent permitted by applicable law, Diablo expressly disclaims any warranty for the software product. The software product and any related documentation is provided "as is" without warranty of any kind, either express or implied, including, without limitation, the implied warranties or merchantability of fitness for a particular purpose. The entire risk arising out of use or performance of the software product remains with the customer.

Limitation of Liability and Customer Remedies: Diablo's entire liability and the customer's exclusive remedy under this license agreement shall be, at Diablo's option, either (a) return of the price paid for the software or (b) replacement of the software that does not meet Diablo's Limited Warranty and which is returned to Diablo with a copy of the customer's receipt. Any replacement software will be warranted for the remainder of the original warranty period, or 30 days, whichever is longer. These remedies are not available outside the United States of America.

No Liability for Consequential Damages: To the maximum extent permitted by applicable law, in no event shall Diablo be liable for any damages whatsoever (including, without limitation, damages for loss of business profit, business interruption, loss of business information, or any other pecuniary loss) arising out of the use or inability to use the product, even if Diablo has been advised of the possibility of such damages. Because some states/jurisdictions do not allow the exclusion or limitation of liability for consequential or incidental damages, the above limitation may not apply to you.

Contents

- EZReporter Quick Start Guide** **1**
 - Introduction 1
 - Prerequisites 1
 - Installation and Configuration Checklist..... 1
 - Install the EZReporter Software 2
 - Upgrading from the Diablo BTU Calculator Software 2
 - Software License and Registration 3
 - Activate your License 3

- Configure EZReporter** **5**
 - Introduction 5
 - Load and Edit the Configuration File 5
 - Edit Component List 7
 - Customize the Report..... 9
 - Specify Other NGA Calculation Parameters 9

- Configure EZChrom** **11**
 - Introduction 11
 - Configure EZChrom for Data Export..... 11
 - Configure EZChrom to run the EZReporter Connector Software 13
 - Processing EZChrom Results 14

- Hints, Tips, and Troubleshooting** **15**
 - Frequently Asked Questions..... 15
 - Hints and Best Practices 16

- Index** **19**

EZReporter Quick Start Guide

Introduction

This Quick Start guide is intended to provide instructions on installing and configuring the Diablo Analytical EZReporter software to process results automatically from the Agilent Technologies EZChrom Elite or SI chromatography data system. Please refer to the EZReporter Reference Manual for the details about configuring EZReporter's many features and options.

Important:

There are several places in this manual where particularly important information is identified by the "Important" call out (like this). If you read nothing else in this manual, please read these important items.

Prerequisites

1. You should have already installed the EZChrom chromatography data system, and created a method and calibration that produces external standard results. Refer to the data system help files and documentation or contact the data system vendor support for assistance in installing and configuring the data system.

Installation and Configuration Checklist

- Install the Agilent EZChrom software
- Create a calibrated method in EZChrom
- Install the Diablo EZReporter software
- Activate your EZReporter license
- Load a suitable EZReporter configuration as a starting place
- Edit the EZReporter component list to match the components reported by EZChrom
- For Natural Gas Analysis reports, set the correct base pressure for the calculations.
- Customize the EZReporter Report to meet you needs
- Save your customized EZReporter configuration to a new settings file.
- Configure the Agilent EZChrom method to export an External Standard report (repeat for all detector channels)

- ❑ Configure the Agilent EZChrom method to run the EZChrom Connector software (ProcessEZChromData.exe) as the “After Export” program.
- ❑ Save the modified EZChrom method.
- ❑ Analyze or reprocess a sample in EZChrom and confirm that EZChrom and EZReporter are configured correctly.

Install the EZReporter Software

To install the EZReporter software, simply run the installation program that was downloaded from our web site or provided on the installation CD-ROM. Follow the directions presented by the installation program. The installation program will install the Diablo EZReporter in trial mode on new systems, or will update licensed installations to the latest version of the software.

Important:

- You must be logged in to an account with Administrator privileges in order to install the software.
 - Any users who will be running the software under a non-administrator account must have full read/write permissions to the EZReporter directories and files. The installation program grants these rights to the “Everyone” user group. However, if the “Everyone” user group is disabled on the network, then you will have to grant these permissions manually.
-

Installation Paths and Folders

The EZReporter software is installed to the folder,

“C:\Program Files\Diablo EZReporter” (Win XP and Win 7-32 bit)

“C:\Program Files (x86)\Diablo EZReporter” (Win 7-64 bit)

EZReporter configuration and template files are saved in the “Settings” folder,

“C:\Program Files\Diablo EZReporter\Settings” (Win XP and Win 7-32 bit)

“C:\Program Files (x86)\Diablo EZReporter\Settings” (Win 7-64 bit)

EZReporter data files are saved by default in the “Data” folder,

“C:\Program Files\Diablo EZReporter\Data” (Win XP and Win 7-32 bit)

“C:\Program Files (x86)\Diablo EZReporter\Data” (Win 7-64 bit)

Upgrading from the Diablo BTU Calculator Software

The EZReporter Natural Gas Analysis (NGA) Edition replaces the BTU Calculator software and can read existing BTU Calculator configuration and data files directly.

The EZReporter installer doesn't touch an existing BTU Calculator installation - the two programs can be installed and run on the same computer.

Automatic Import of Configuration and Template Files

The first time you start EZReporter, the software will attempt to import any custom (non-default) configuration or export template files from the BTU Calculator installation folder. It will also edit the imported configuration files so that the default data directory and/or export directory no longer point to their old location in the BTU Calculator folder structure (if that is where they were set). The original files are not modified by the import procedure.

Configuration and template files are now kept in the "Settings" folder under the EZReporter installation folder in order to reduce clutter in the main installation folder and make it easier to find these files.

Changes to EZChrom Methods

You will need to update your EZChrom methods in order to have them use EZReporter instead of the BTU Calculator for automatic processing:

EZChrom: Change the "After Export Program" to,

"C:\Program Files\Diablo EZReporter\ProcessEZChromData.EXE"

Software License and Registration

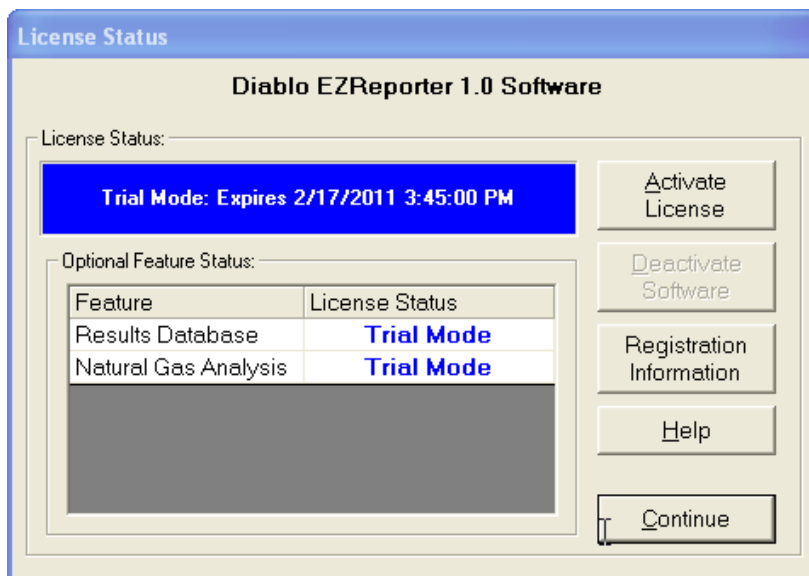
The EZReporter software is distributed as a fully functional 30-day trial application. The trial version has all of the features of the registered version, but you will be reminded that you are running the trial version with a "nag" screen each time you start the software. At the end of the 30-day trial period the application will no longer start unless you purchase a license or request an evaluation extension from Diablo Analytical.

Important:

Important: The Results Database and Natural Gas Analysis (NGA) Module are add-on options that require payment of additional license fees and require separate license activation codes (unless they are included in the particular software edition that you have licensed). However, you can evaluate these features during the 30-day trial period of the base software. If you activate the base software without also activating the results database and/or natural gas analysis feature, then the unactivated features will be disabled.

Activate your License

Please refer to the Diablo Software License Guide for information on how to activate the base EZReporter module or any of the optional modules. This guide can be accessed through the "Help" button on the License Status window that is displayed when you start the software or by selecting the "License Status" option of the "Help" menu. An Adobe Acrobat (PDF) version of the guide is also saved in the EZReporter installation folder.



The EZReporter "License Status" window used to activate the software.

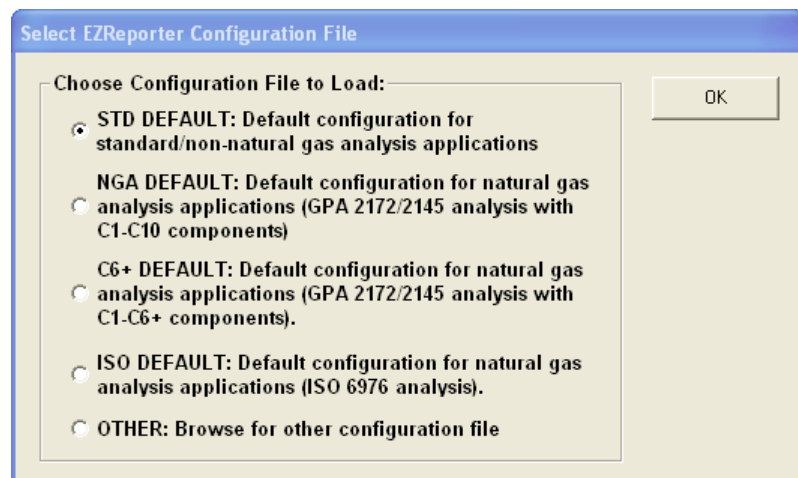
Configure EZReporter

Introduction

EZReporter ships with a number of default configuration files. The default configuration files are primarily designed for Natural Gas Analysis (NGA) and reporting. For other applications with a different list of components, you can simply clear the default component list and type in the names of your components without worrying about entering NGA physical properties.

Load and Edit the Configuration File

The first time you run EZReporter the following window will be displayed allowing you to choose the default configuration file you would like to load:



Choose the default configuration that most closely matches your application or browse for a specific configuration file. Once you have loaded the configuration file, you should configure the settings for your application. To open the configuration editor, select the "Edit Configuration.." option of the "Tools" menu..

Important

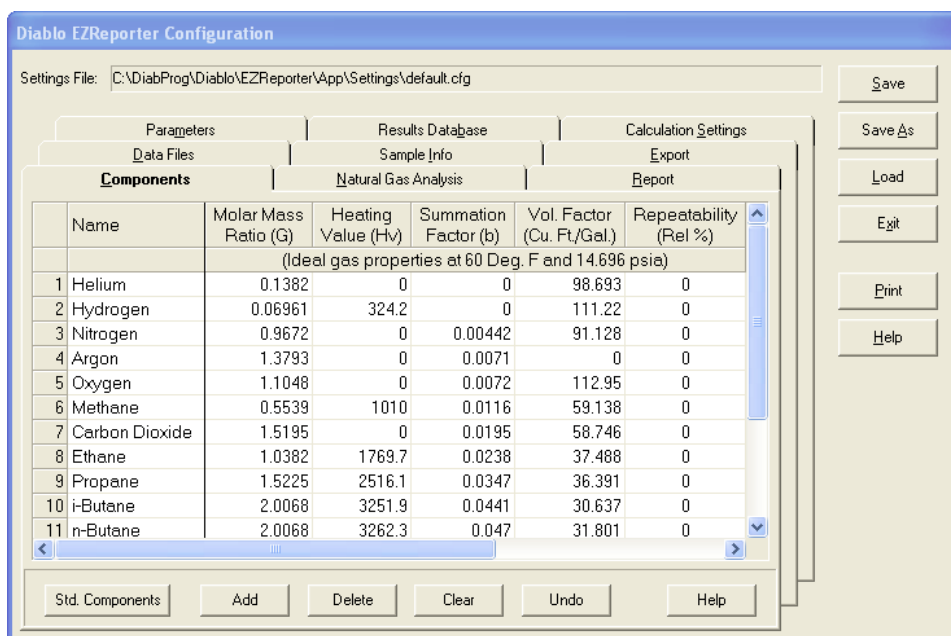
If you upgrade or re-install the EZReporter Software, all of the default configuration files listed in this table will be overwritten with the current versions. Consequently, if you use any of these default configuration files as the basis for a custom configuration, make sure to save your configuration file with a different file name.

EZReporter Standard Configuration Files	
File	Description
Default Configuration Files	
STD Default.cfg	The default configuration for standard/non-natural gas analysis applications. It does not include any pre-configured components. You will need to add the components required for your analysis.
NGA Default	A default configuration for natural gas analysis applications (GPA 2172/2145 analysis with C1-C10 components). The Pressure Base is set to 14.73 in this file.
C6+ Default.cfg	An alternate configuration for natural gas analysis applications (GPA 2172/2145 analysis with C1-C6+ components).. The calculation factors used for the hexanes plus component are based on a 60:30:10 mixture of hexane, heptane, and octane. The GPA 2145-09 Standard was used to calculate the Hexanes+ calculation factors.
ISO Default.cfg	A default configuration for natural gas analysis applications (ISO 6976 analysis). The physical property data are for a combustion temperature of 15 Deg. C and a metering temperature of 15 Deg. C.
ISO 6976 (0-0 Deg C).cfg	Similar to the ISO Default configuration except the physical property data are for a combustion temperature of 0 Deg. C and a metering temperature of 0 Deg. C.
ISO 6976 (15-0 Deg C).cfg	Similar to the ISO Default configuration except the physical property data are for a combustion temperature of 15 Deg. C and a metering temperature of 0 Deg. C.
ISO 6976 (25-0 Deg C).cfg	Similar to the ISO Default configuration except the physical property data are for a combustion temperature of 25 Deg. C and a metering temperature of 0 Deg. C.
ISO 6976 (15-15 Deg C).cfg	Identical to the ISO Default configuration with a combustion temperature of 15 Deg. C and a metering temperature of 15 Deg. C.
ISO 6976 (20-20 Deg C).cfg	Similar to the ISO Default configuration except the physical property data are for a combustion temperature of 20 Deg. C and a metering temperature of 20 Deg. C.
ISO 6976 (25-20 Deg C).cfg	Similar to the ISO Default configuration except the physical property data are for a combustion temperature of 25 Deg. C and a metering temperature of 20 Deg. C.
NGL Default (WtPct-Combined).cfg	A default configuration for Natural Gas Liquids (NGL) with “combined” extended fraction reporting. With this calculation and reporting method the extended fraction results are reported separately and are also combined into the standard /total results through the specified combined component (usually Hexanes Plus). This configuration includes the full component list from GPA TP-17.
NGL Default (WtPct-Combined-Corrected).cfg	A default configuration for Natural Gas Liquids (NGL) with “combined” extended fraction reporting. This configuration file is the same as the “Combined” configuration, but it is also set up to correct the raw component amounts in the extended fraction using a correction (“bridge”) factor calculated from the iso-pentane and n-pentane amounts from the standard component range (usually from the TCD detector) and the extended component range (usually from the FID detector).
NGL Default (WtPct-Separate).cfg	A default configuration for Natural Gas Liquids (NGL) with “separate” extended fraction reporting. With this calculation and reporting method, the extended fraction results are reported separately from the standard/total results. This configuration includes the full component list from GPA TP-17.

EZReporter Standard Configuration Files	
File	Description
GPA 2145-03.cfg	Contains the components and factors in the GPA 2145-03 Standard. The Pressure Base is set to 14.696 in this file.
GPA 2145-09.cfg	Contains the components and factors in the GPA 2145-09 Standard. The Pressure Base is set to 14.696 in this file.
GPA 2177-03.cfg	A configuration based on the GPA 2177-03 standard. The pressure base is set to 14.696 in this file.
ASTM D3588-98 (2003).cfg	Contains a sub-set of the components and factors in the ASTM D3588-98 (2003) standard. The Pressure Base is set to 14.696 in this file.
Refinery Gas.cfg	A configuration containing common components found in refinery gas. Physical properties are taken from GPA 2145-09, ASTM D3588 (98), GPSA Engineering Data Book (2004) and other sources.
Calculation Check Configuration Files	
GPA 2172-09 Calculation Check at 14.696 psia.cfg	A configuration designed to check the GPA 2172-09 NGA calculations made at a bas pressure of 14.696 psia. Simply load the corresponding data file (GPA 2172-09 Example Data at 14.696 psia.btu) and switch to the “Parameters” table.
GPA 2172-09 Calculation Check at 14.65 psia.cfg	Same as above except it is designed to check the calculations at a bas pressure of 14.65 psia. Make sure to load the correct data file (GPA 2172-09 Example Data at 14.65 psia.btu)
GPA 2177-03 Calculation Check (VolPct).cfg	A configuration designed to check the GPA 2177-03 calculations made at a baes pressure of 14.696 psia. Simply load the corresponding data file (GPA 2177-03 (VolPct).btu) and switch to the “Parameters” table.
GPA 2186-02 Calculation Check (MolPct-Separate).cfg	A configuration designed to check the GPA 2186-02 NGL calculations using the Mole% component amounts and separate extended fraction report. Simply load the corresponding data file (GPA 2186-02 Calculation Check (MolPct-Separate).btu) and switch to the “Parameters” table.
GPA 2186-02 Calculation Check (WtPct-Combined).cfg	A configuration designed to check the GPA 2186-02 NGL calculations using the Weight% component amounts and combined extended fraction report. Simply load the corresponding data file (GPA 2186-02 Calculation Check (WtPct-Combined).btu) and switch to the “Parameters” table.
GPA 2186-02 Calculation Check (WtPct-Separate).cfg	A configuration designed to check the GPA 2186-02 NGL calculations using the Weight% component amounts and separate extended fraction report. Simply load the corresponding data file (GPA 2186-02 Calculation Check (WtPct-Separate).btu) and switch to the “Parameters” table.
ISO 6976 Calculation Check.cfg	A configuration designed to check the ISO 6976 NGA calculations. Simply load the corresponding data file (ISO 6976 Calculation Check.btu) and switch to the “Parameters” table.

Edit Component List

In order for EZReporter to recognize the EZChrom component results, the component names in the EZReporter component list must match the names used in the EZChrom peak tables and reports. To access the EZReporter component table simply click the “Tools > Edit configuration...” menu option and select the “Components” tab.

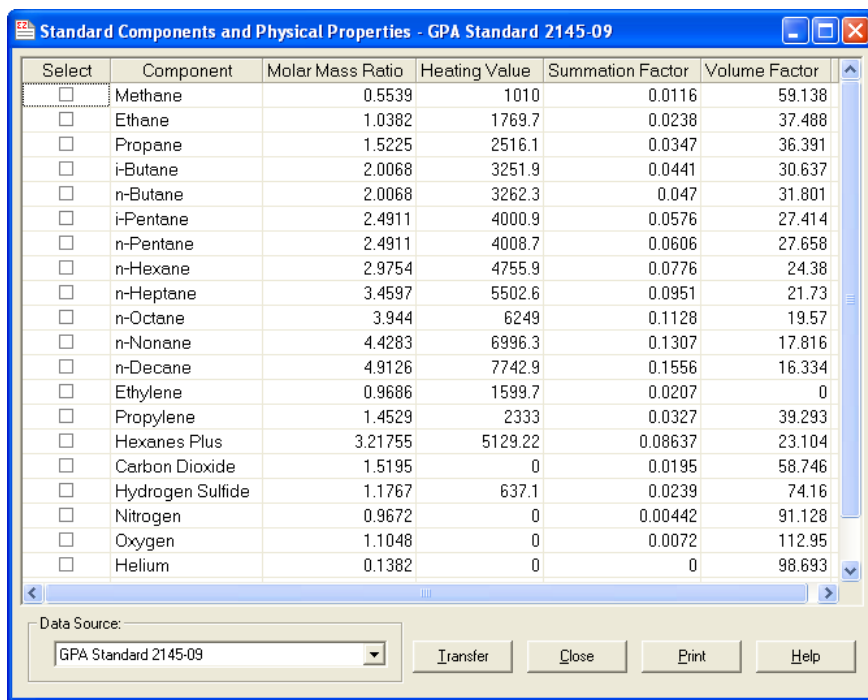


EZReporter configuration screen – Components Tab

Renaming Components: To rename existing components, simply double click the name in the component table and edit it in place.

Adding New Components: To add a new component to the configuration you can click the “Add” button to add a new row to the component table and then fill in the component name and other details manually.

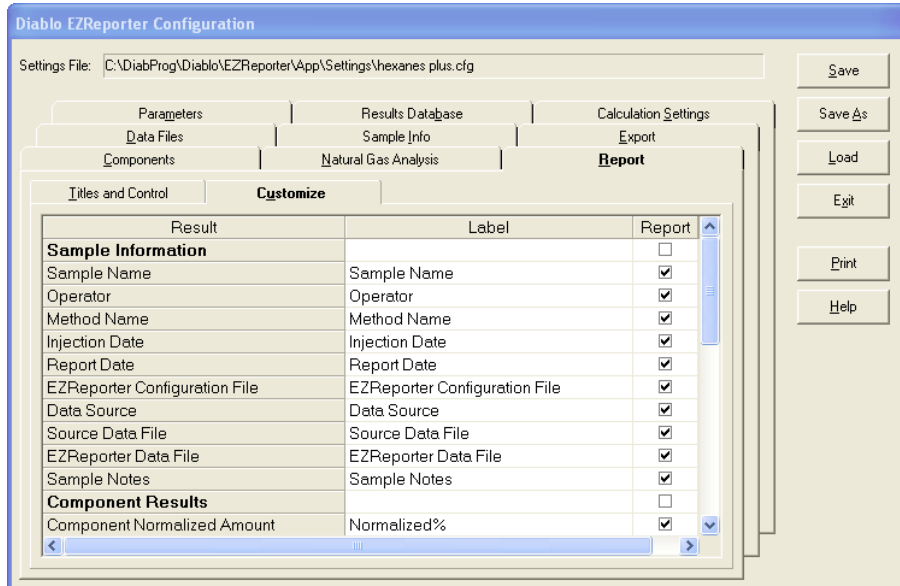
Alternatively for Natural Gas Analysis applications, click the “Std Components” button and choose the desired component from one of the standard data sources. Choose the desired “Data Source”, check the desired components to add to your configuration, and then click the “Transfer” button.



Standard Components for Natural Gas Analysis

Customize the Report

You can customize the results and sample information that are included in the displayed/printed report. To customize the EZReporter report simply click the “Tools > Edit configuration...” menu option and select the “Report” tab and “Customize” sub tab.



EZReporter configuration screen – Report - Customize Tab

Simply check the sample information, component results, and total/summary results that you want to have displayed in the report. You can also customize the label that is displayed for each result in the report.

Specify Other NGA Calculation Parameters

Pressure Base: Make sure to set the Pressure Base to the correct value for your location or your contractual requirements. All of the default configuration files use a Pressure Base of 14.696 or 14.73 psia. It is the customer’s responsibility to determine the correct Pressure Base to use for their specific requirements. Note that the North American Energy Standards Board (NAESB) specifies a standard pressure base of 14.73 psia. Consequently many companies are adopting 14.73 as the standard pressure base for these calculations. You can change the pressure base used in the calculations in the “Natural Gas Analysis” tab of the configuration editor. ISO Configurations all use a base/reference pressure of 101.325 kPa.

Configure EZChrom

Introduction

The Diablo EZReporter software supports automated processing of calibrated, external standard peak results generated by the Agilent Technologies EZChrom Elite or EZChrom SI data systems. This support is accomplished using the “Export” option of the EZChrom “Advanced Method Options”. This option will export the analysis results to a delimited text file that can then be read and processed by the EZReporter Software.

Important:

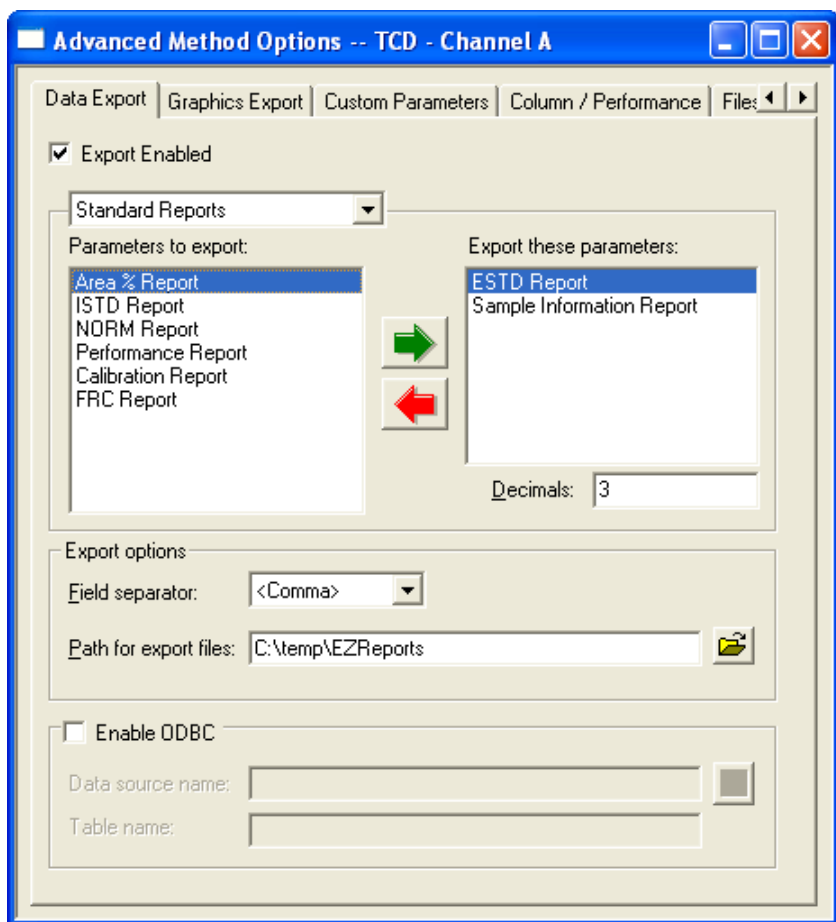
In order to process results from the Agilent Technologies EZChrom data system, you must first make sure that the component names in the EZReporter component settings table match the peak names in the EZChrom calibration tables. For example, if a compound is named "Hexane" in the EZChrom calibration table, it must also be entered as "Hexane" in the component settings table (not "n-Hexane", or "nC6").

Configure EZChrom for Data Export

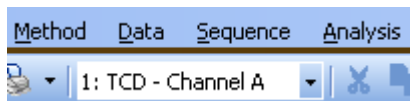
To configure EZChrom for data export to the EZReporter software, open the “Advanced Method Options” dialog box via the “Method > Advanced...” menu. Next, configure the “Export” tab as follows:

Important:

Make sure to save the EZChrom method once you have made the following modifications.



1. Click the “**Export Enabled**” box so that is checked.
2. Select “**Standard Reports**” from the list box.
3. In the “Parameters to export:” list, select “**ESTD Report**” and click the right/green arrow button so that “ESTD Report” appears in the “Export these parameters list on the right.
4. Repeat step 3 with the “**Sample Information Report**” (this step only needs to be done for the first detector channel).
5. Under “Export options”, select <Comma> or <Tab> as the “Field separator” (see the discussion below), and enter path to the directory where the export files will be made available to the EZReporter software. This path must exist.
6. **Important:** You must repeat these steps for each detector channel present in the method. Use the detector channel list box located in the EZChrom toolbar to switch between channels:



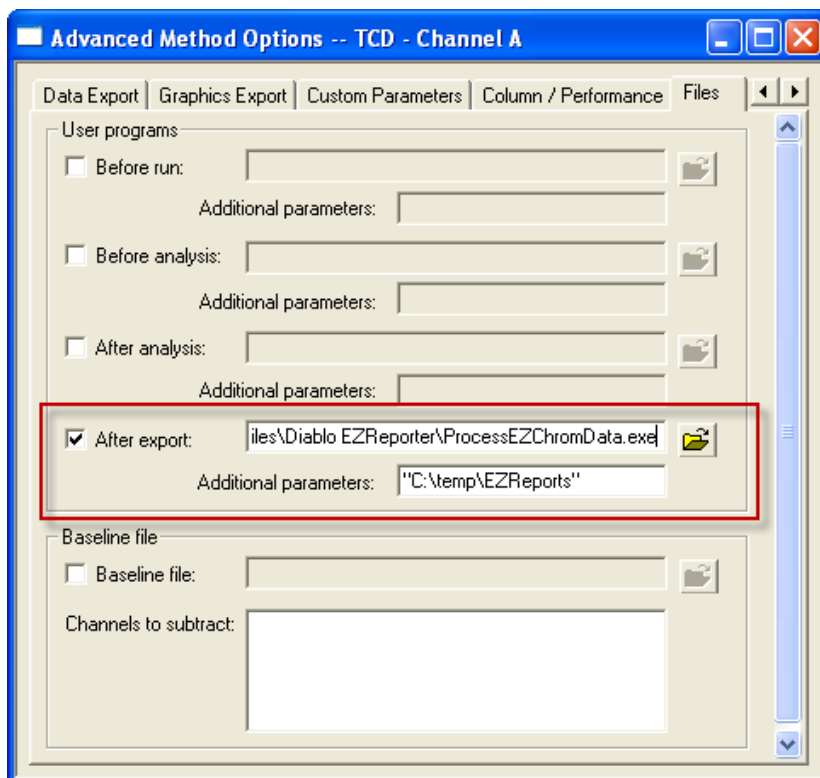
EZChrom detector channel list box

Important:

If you are going to use component names that contain a comma (“1,3-Butadiene” for example), then you need to set up EZChrom for <Tab> delimiters.

Configure EZChrom to run the EZReporter Connector Software

After configuring the export parameters for each channel, switch to the “Files” tab of the Advanced Method Options, and configure it as follows:



The EZChrom “Advanced Method Options” window configured to process results automatically with EZReporter.

1. Under “User programs” check the “After export” checkbox.
2. Use the “file open” button to the right to select the ProcessEZChromData.exe “connector” program as the user program. This program is located in the EZReporter software installation directory, which is:
“C:\Program Files\Diablo EZReporter\” (Windows XP and Windows 7-32 bit)
“C:\Program Files (x86)\Diablo EZReporter\” (Windows 7-64 bit)
3. In the “Additional parameters” text box, enter the export path that you entered for the export options above.

Important:

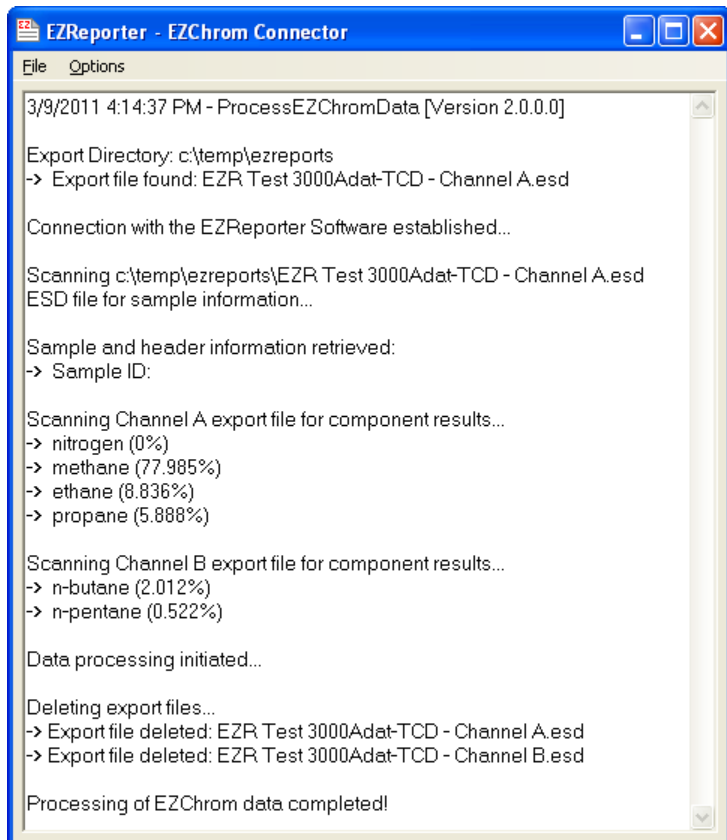
If the export path contains any space characters, it must be enclosed in quotation marks. For example,

“C:\Program Files\Diablo EZReporter\Export Files”

Processing EZChrom Results

Once you have configured EZChrom as described above, the external standard export file(s) will be created each time a sample is analyzed or re-analyzed. After creating the export files, EZChrom will then run the “ProcessEZChromData.exe” program, passing it the path to containing the export directory.

The Connector program will check the export directory for any external standard (ESD) export files. If any are found it will read the sample information and component data and pass it to the EZReporter software for processing.



The EZChrom Connector's status/log window

Important:

Important Additional Notes:

- You must start the Diablo EZReporter software before exporting and processing data from EZChrom.
 - If the Connector program successfully retrieves the results from EZChrom and the EZReporter software runs successfully, then the Connector program will close automatically. However, if any errors occur, the Connector program will remain open to allow you to check the log window for information about the error.
 - If data processing is successful, any EZChrom export files present in the export directory will be deleted automatically.
-

Hints, Tips, and Troubleshooting

Frequently Asked Questions

Question:

Why am I not seeing any results in EZReporter after making a run in my chromatography data system.

Answer:

1. EZReporter wasn't started when you tried to process results from your chromatography data system.
2. The component names in your data system peak table and report don't match any of the component names in the EZReporter component table.
3. You switched to a method that isn't set up to export ESTD results and call the EZReporter "Connector" program for your data system or the export is not set up correctly.
4. After activating the EZReporter license, you should close and then re-open EZReporter before trying to process results from your chromatography data system.
5. You have configured your chromatography data system to create tab-delimited export files, but the "Connector" program is expecting comma-delimited files.

Question:

Why are some of the component amounts in EZReporter reported as "0" when I know they are correct in the chromatography data system.

Answer:

1. Most likely the component name is spelled differently in the data system's Peak Table than it is in the EZReporter component table.

Question

Why do my natural gas analysis results not match previous results from the same sample or reported from another software program or laboratory?

Answer

There could be many reasons for this. Here are a few of the most common possibilities:

1. Small differences may simply be due to rounding error if a different number of decimal places were used for component amounts or any of the physical properties or factors used in the calculation.
2. If the results were calculated from a different chromatography run, then small differences are expected. The GPA publishes acceptable repeatability limits (same sample analyzed in the same lab) and reproducibility limits (same sample analyzed in a different lab). In addition, if the samples were taken at different times from a flowing source like a well, then it is expected that results will vary from sample to sample.
3. You are using a different set of physical properties in EZReporter than were used previously. The GPA updates the physical properties used in the calculations from time to time. The last update was in early 2010 when the GPA 2145-09 standard was published.
4. You are using a different base pressure in the calculations. This can have a significant impact on the “Real” results, which are corrected for base pressure.

Question

EZReporter is only reporting “Dry” results. How do I configure EZReporter to report ‘Saturated’ results?

Answer

In order to generate “Saturated” results you must add “Water” as a component to the component list in the configuration.

Hints and Best Practices

Here is a list of hints and best practices for EZReporter.

1. After successfully activating the software license, close and then restart the software before trying to process results automatically from your chromatography data system.
2. Always start the EZReporter Software before trying to process results automatically from your chromatography data system.
3. Make sure that you have set the pressure base in each configuration file you use to the correct value for your location or your contracts. The pressure base used for calculations is often agreed to contractually with your customers.
4. If you customize one of the default configuration files by changing any of the settings in the configuration editor, you should save it to a different file name using the “Save As” option in order to prevent it from being overwritten when you install a new version of the software.
5. Always save backup copies of your configuration file and export template file (if you use this feature) to a flash drive or other secure location that is not located on the same hard drive as the EZReporter software. This will allow you to recover quickly from a hard drive failure. Make new backup copies whenever you make any changes to the configuration or export template. The latest versions of EZReporter have a menu option that makes it convenient to backup your configuration files to a date and time-stamped zip file.
6. In order for the EZReporter software to process results from your chromatography data system properly, it is important that the component names in the “Components” tab of the configuration editor match the component names in your chromatography data system peak tables. One hint that you may have mismatched component names is if the component mole% is reported as 0 in EZReporter, while it is non-zero in the your chromatography data system results for that sample.
7. If you want the EZReporter to report “Saturated” results in addition to “Dry” results, simply add “Water” as a component to the component list in the configuration.

8. The physical properties for “Hexanes Plus” are calculated based on a 60/30/10 ratio of the individual physical properties of n-hexane, n-heptane, and n-octane. If you want to use some other ratio for your own calculations, we have provided an Excel spreadsheet, “Hexanes Plus Factors.XLS”, in the EZReporter installation folder to facilitate this.
9. Make sure that you have configured and calibrated your GC in your chromatography data system, and are generating accurate mole% results before sending results to EZReporter.

Index

A

Activate your License 3

C

Configure EZChrom 11

Configure EZChrom for Data Export 11

Configure EZChrom to run the EZReporter Connector
Software 13

Configure EZReporter 5

Customize the Report 9

E

Edit Component List 7

EZReporter Quick Start Guide 1

F

Frequently Asked Questions 15

H

Hints and Best Practices 16

Hints, Tips, and Troubleshooting 15

I

Install the EZReporter Software 2

Installation and Configuration Checklist 1

Introduction 1, 5, 11

L

Load and Edit the Configuration File 5

P

Prerequisites 1

Pressure Base 6, 7

Processing EZChrom Results 14

S

Software License and Registration 3

Specify Other NGA Calculation Parameters 9

U

Upgrading from the Diablo BTU Calculator Software 2